

FOR SUBLEASE

842 Square Feet

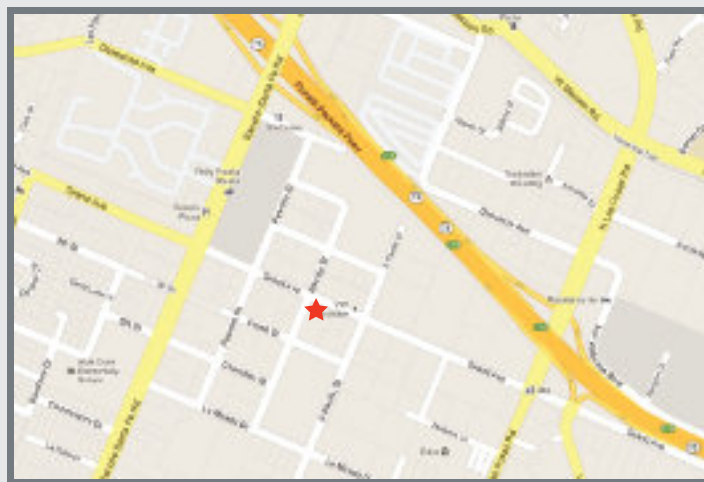
Professional / Medical Office Suite



1535 Grand Avenue, Suite B, San Marcos, CA 92078

Property Features:

- Beautiful, Garden Style Professional Office Center in the Heart of San Marcos, Approx. 842 sq.ft.
- Project has High Visibility on Grand Avenue
- Great Monument and Suite Signage
- Easy Access to Las Posas, Rancho Santa Fe Road, and Hwy. 78
- Convenient Central, North County Location
- Great Parking, 5.57:1,000 Spaces
- \$.12 per sq.ft. per Month CAM Fees
- Rare Single Level Professional/Medical Office Space
- Contact Listing Agent for Showing Instructions



\$1.75 /Mod. Gross



CalBRE# 01385958

For more information on this property, your current property, or your future location, please contact:

Kenneth Dubs, Jr.

CalBRE#01277355

kdjr@dubsandcompany.com

Office (760) 591-4100 Fax (760) 591-4102

1850 Diamond Street, Suite 103, San Marcos, California 92078

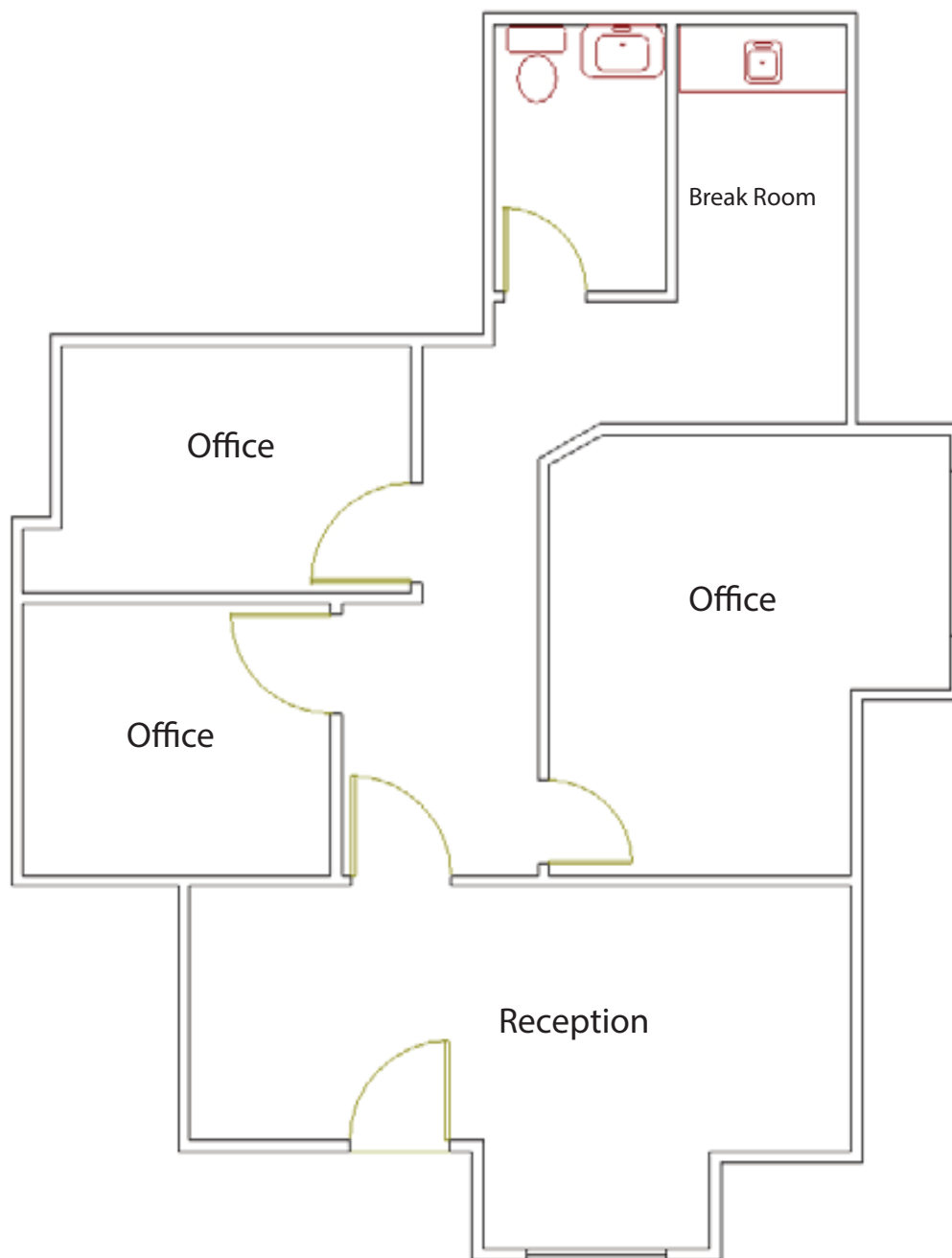
The information contained herein is deemed reliable, however no representations, warranties, or guaranties of any kind are made by Dubs and Company, Inc.

FOR SUBLEASE

842 Square Feet

Professional / Medical Office Suite

1535 Grand Avenue, Suite B, San Marcos, CA 92078



\$1.75 /mo. Mod. Gross

For more information on this property, your current property, or your future location, please contact:

Kenneth Dubs, Jr.

CalBRE#01277355

kdjr@dubsandcompany.com

Office (760) 591-4100 Fax (760) 591-4102

1850 Diamond Street, Suite 103, San Marcos, California 92078

CalBRE# 01385958

The information contained herein is deemed reliable, however no representations, warranties, or guaranties of any kind are made by Dubs and Company, Inc.

