

COUNTRY CLUB PLAZA

1860 – 1896 El Norte Parkway, Escondido, California 92026

±1,000 SF Retail Suites & Executive Offices

Rates from
\$1.70/sf NNN



- Busy Neighborhood Community Retail/Office Center
- Excellent Visibility at Signalized Intersection
- Monument Street Signage Available
- Ample Parking : 4/1,000 Square Feet
- Tenants Include: 7-Eleven, Cenote Grill, Blue Mug Coffee, Salon & Barber

For more information on this property, your current property, or your future location, please contact:

Kenneth P. Dubs, Jr. CalBRE# 01277355
kdjr@dubsandcompany.com



CalBRE# 01385958

1850 Diamond Street, Suite 103, San Marcos, California 92078

Office (760) 591-4100 Fax (760) 591-4102

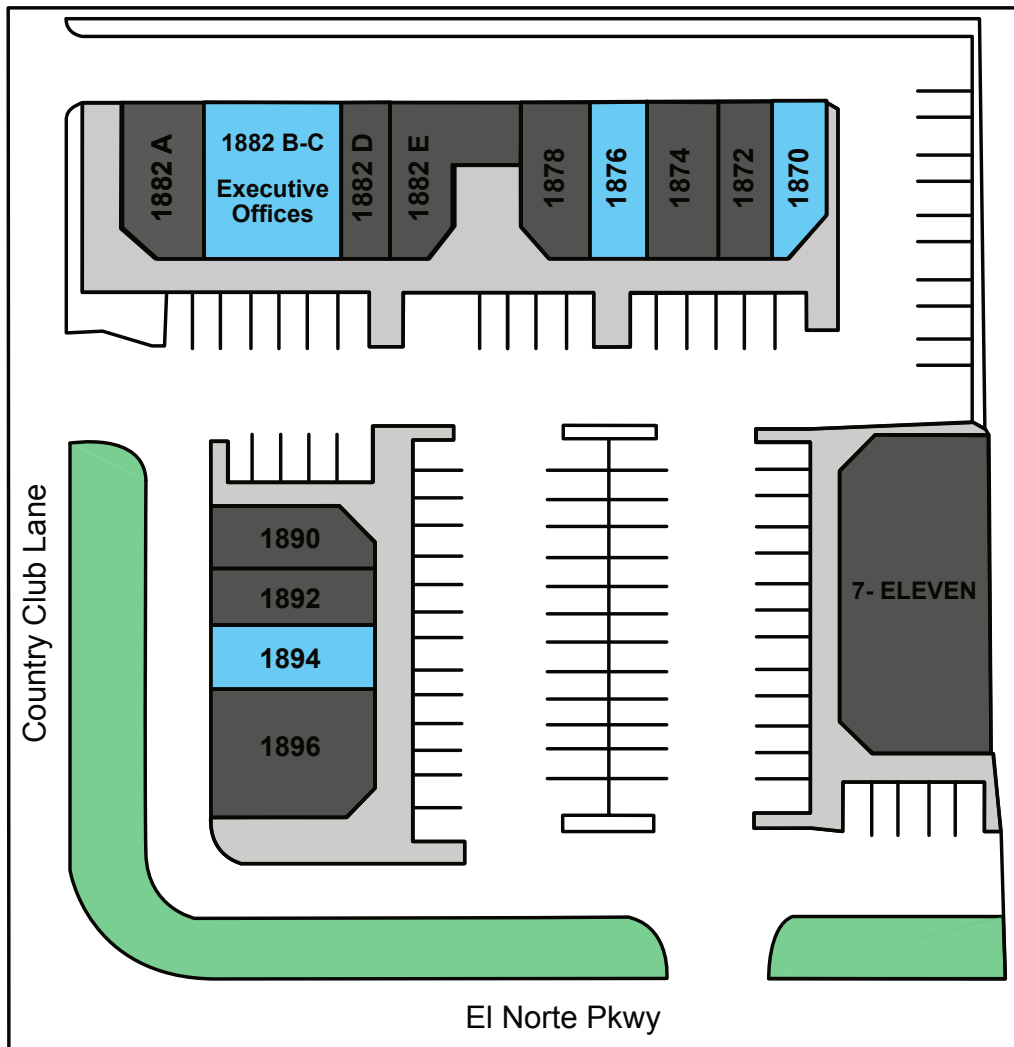
The information contained herein is deemed reliable, however no representations, warranties, or guaranties of any kind are made by Dubs and Company, Inc.

COUNTRY CLUB PLAZA

1860 – 1896 El Norte Parkway, Escondido, California 92026

±1,000 SF Retail Suites & Executive Offices

Rates from
\$1.70/sf NNN



Leasing Opportunities

Retail / Office Suites

Suite#	Size	Rate	NNN	Total/mo.
1870	1,010 s.f.	\$1.85	\$.55	\$2,424
1876	1,000 s.f.	\$1.85	\$.55	\$2,400
1894	1,000 s.f.	\$1.70	\$.55	\$2,250

Executive Offices 1882 Building

Suite#	Approx. Size	Offices	Total/mo.
B-18	10' x 11'	Single	\$500
C-11/12	2x (10' x 12')	Double	\$850
C-14	10' x 11'	Single	\$400

\$50/month per executive office for utilities

For more information on this property, your current property, or your future location, please contact:

Kenneth P. Dubs, Jr. CalBRE# 01277355

kdjr@dubsandcompany.com

1850 Diamond Street, Suite 103, San Marcos, California 92078

Office (760) 591-4100 Fax (760) 591-4102

CalBRE# 01385958

The information contained herein is deemed reliable, however no representations, warranties, or guaranties of any kind are made by Dubs and Company, Inc.



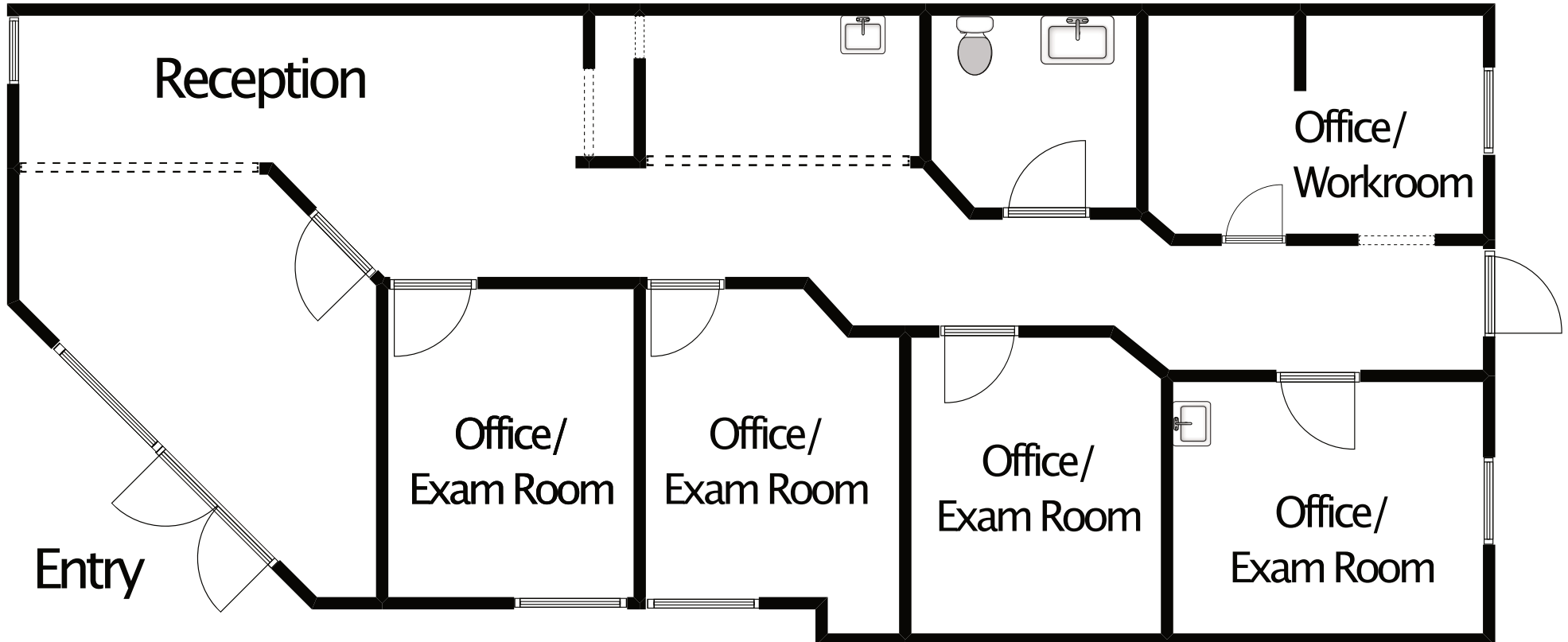
COUNTRY CLUB PLAZA

1870 El Norte Parkway, Escondido, California 92026

1,010 SF Retail Suite

\$1.85/sf NNN

Former Dental Office



For more information on this property, your current property, or your future location, please contact:

Kenneth P. Dubs, Jr. CalBRE# 01277355
kdjr@dubsandcompany.com



CalBRE# 01385958

1850 Diamond Street, Suite 103, San Marcos, California 92078

Office (760) 591-4100 Fax (760) 591-4102

The information contained herein is deemed reliable, however no representations, warranties, or guaranties of any kind are made by Dubs and Company, Inc.

COUNTRY CLUB PLAZA

1876 El Norte Parkway, Escondido, California 92026

1,000 SF Retail Suite

\$1.85/sf NNN



For more information on this property, your current property, or your future location, please contact:

Kenneth P. Dubs, Jr. CalBRE# 01277355
kdjr@dubsandcompany.com



CalBRE# 01385958

1850 Diamond Street, Suite 103, San Marcos, California 92078

Office (760) 591-4100 Fax (760) 591-4102

The information contained herein is deemed reliable, however no representations, warranties, or guaranties of any kind are made by Dubs and Company, Inc.

COUNTRY CLUB PLAZA

1894 El Norte Parkway, Escondido, California 92026

1,000 SF Retail Suite

\$1.70/sf NNN



For more information on this property, your current property, or your future location, please contact:

Kenneth P. Dubs, Jr. CalBRE# 01277355
kdjr@dubsandcompany.com



CalBRE# 01385958

1850 Diamond Street, Suite 103, San Marcos, California 92078

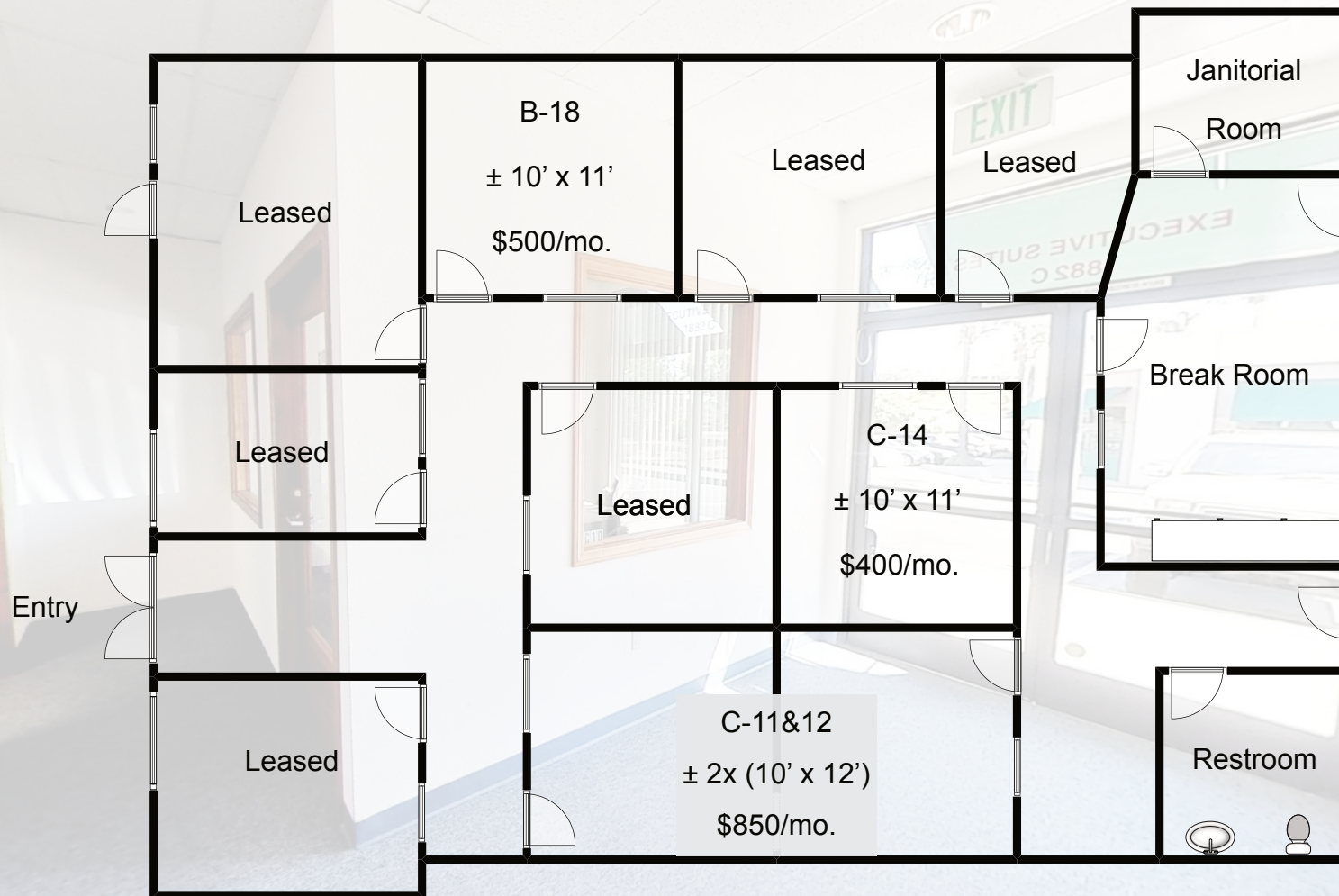
Office (760) 591-4100 Fax (760) 591-4102

The information contained herein is deemed reliable, however no representations, warranties, or guaranties of any kind are made by Dubs and Company, Inc.

COUNTRY CLUB PLAZA

Executive Office

1882 El Norte Parkway, Escondido, California 92026



Pricing above does not include \$50/mo. for Utilities

For more information on this property, your current property, or your future location, please contact:

Kenneth P. Dubs, Jr. CalBRE# 01277355
kdjr@dubsandcompany.com



CalBRE# 01385958

1850 Diamond Street, Suite 103, San Marcos, California 92078

Office (760) 591-4100 Fax (760) 591-4102

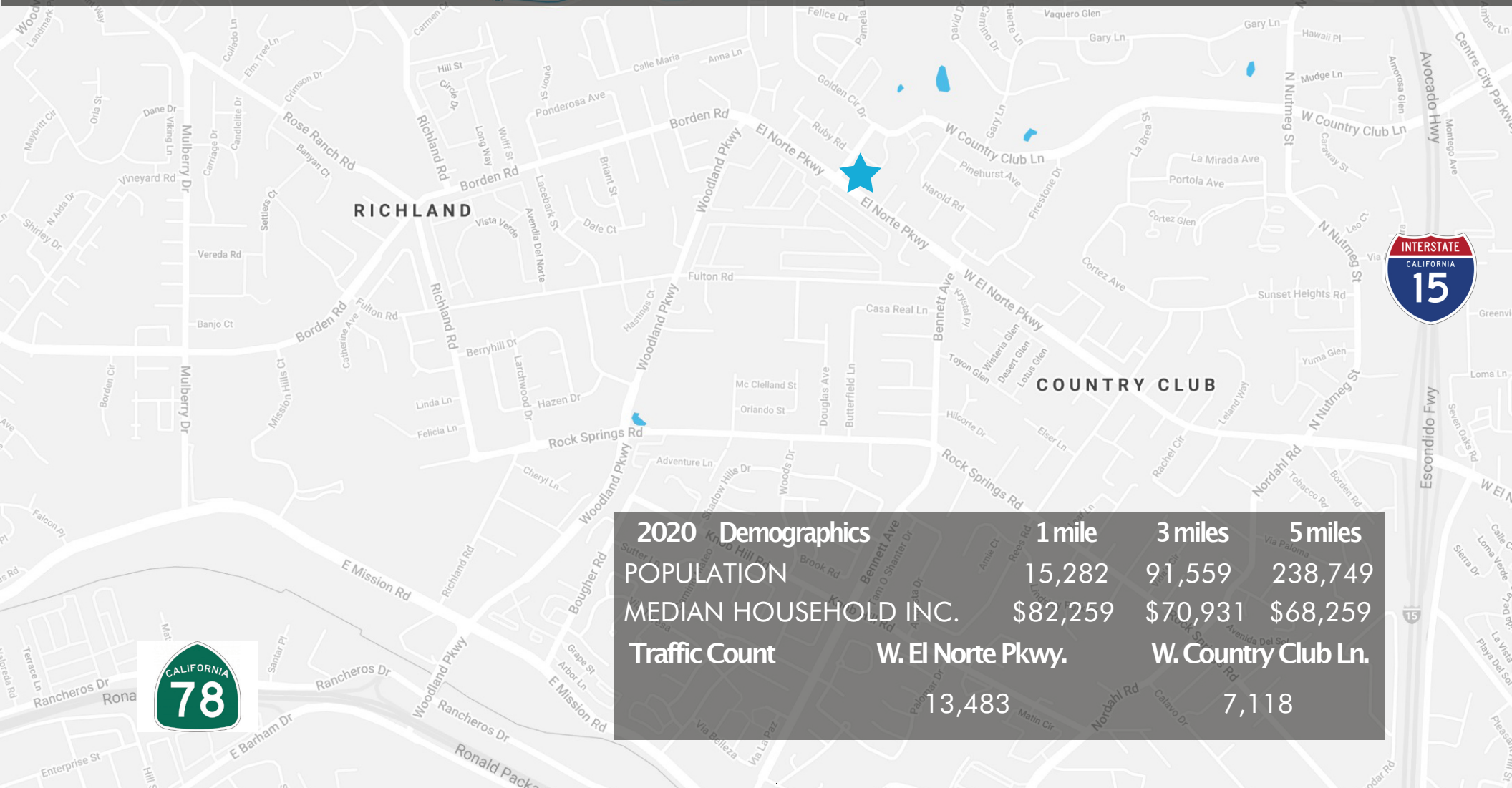
The information contained herein is deemed reliable, however no representations, warranties, or guaranties of any kind are made by Dubs and Company, Inc.

COUNTRY CLUB PLAZA

1860 – 1896 El Norte Parkway, Escondido, California 92026

±1,000 SF Retail Suites & Executive Offices

Rates from
\$1.70/sf NNN



For more information on this property, your current property, or your future location, please contact:

Kenneth P. Dubs, Jr. CalBRE# 01277355
kdjr@dubsandcompany.com

1850 Diamond Street, Suite 103, San Marcos, California 92078

Office (760) 591-4100 Fax (760) 591-4102

CalBRE# 01385958

The information contained herein is deemed reliable, however no representations, warranties, or guaranties of any kind are made by Dubs and Company, Inc.

