

CALIFORNIA BANK & TRUST BUILDING

± 790 to ± 5,892 Square Feet

\$1.15/sf Mod. Gross
+ \$.15 CAM

138 Civic Center Drive, Suites 202, 203, 204, 207 & 208, Vista, California 92084



- Beautiful 2 story professional office building
 - Prominent location in Downtown
 - Vista adjacent to City Hall
 - Well maintained with great access
 - Well suited for general office or medical
 - Ample parking in designated lot
- City of Vista C1 Zoning
- Call Listing agent for showing instructions

For more information on this property, your current property, or your future location, please contact:

Kenneth P. Dubs, Jr. CalBRE# 01277355
kdjr@dubsandcompany.com

1850 Diamond Street, Suite 103, San Marcos, California 92078

Office (760) 591-4100 Fax (760) 591-4102

CalBRE# 01385958

The information contained herein is deemed reliable, however no representations, warranties, or guaranties of any kind are made by Dubs and Company, Inc.



CALIFORNIA BANK & TRUST BUILDING

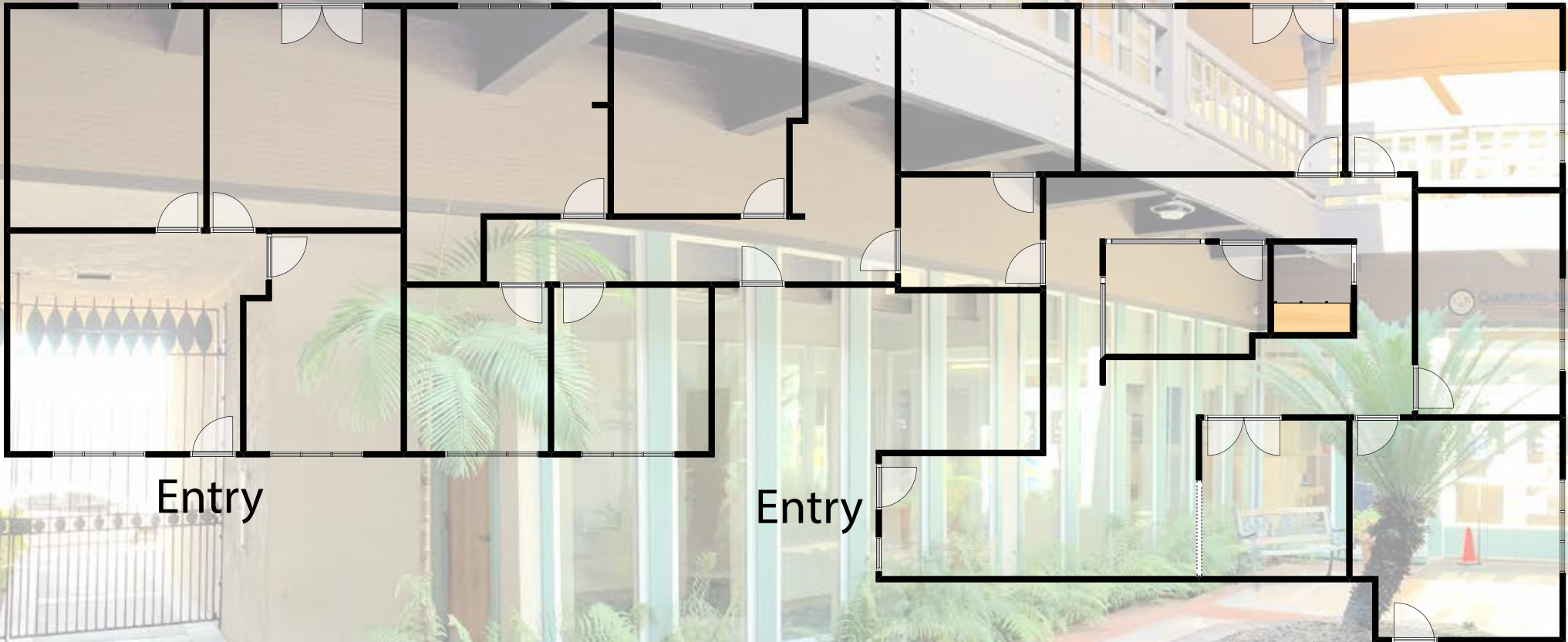
± 790 to ± 5,892 Square Feet

\$1.15/sf Mod. Gross
+ \$.15 CAM

138 Civic Center Drive, Suites 202, 203, 204, 207 & 208, Vista, California 92084

Suite 202 ± 790sf

Suites 203 & 204 ± 2,501sf (divisible)



Entry

Entry

For more information on this property, your current property, or your future location, please contact:

Kenneth P. Dubs, Jr. CalBRE# 01277355
kdjr@dubsandcompany.com

1850 Diamond Street, Suite 103, San Marcos, California 92078

Office (760) 591-4100 Fax (760) 591-4102

CalBRE# 01385958

The information contained herein is deemed reliable, however no representations, warranties, or guaranties of any kind are made by Dubs and Company, Inc.



CALIFORNIA BANK & TRUST BUILDING

± 790 to ± 5,892 Square Feet

\$1.15/sf Mod. Gross
+ \$.15 CAM

138 Civic Center Drive, Suites 202, 203, 204, 207 & 208, Vista, California 92084

Suites 207 & 208 ± 2,601sf (divisible)



For more information on this property, your current property, or your future location, please contact:

Kenneth P. Dubs, Jr. CalBRE# 01277355
kdjr@dubsandcompany.com

1850 Diamond Street, Suite 103, San Marcos, California 92078

Office (760) 591-4100 Fax (760) 591-4102

CalBRE# 01385958

The information contained herein is deemed reliable, however no representations, warranties, or guaranties of any kind are made by Dubs and Company, Inc.

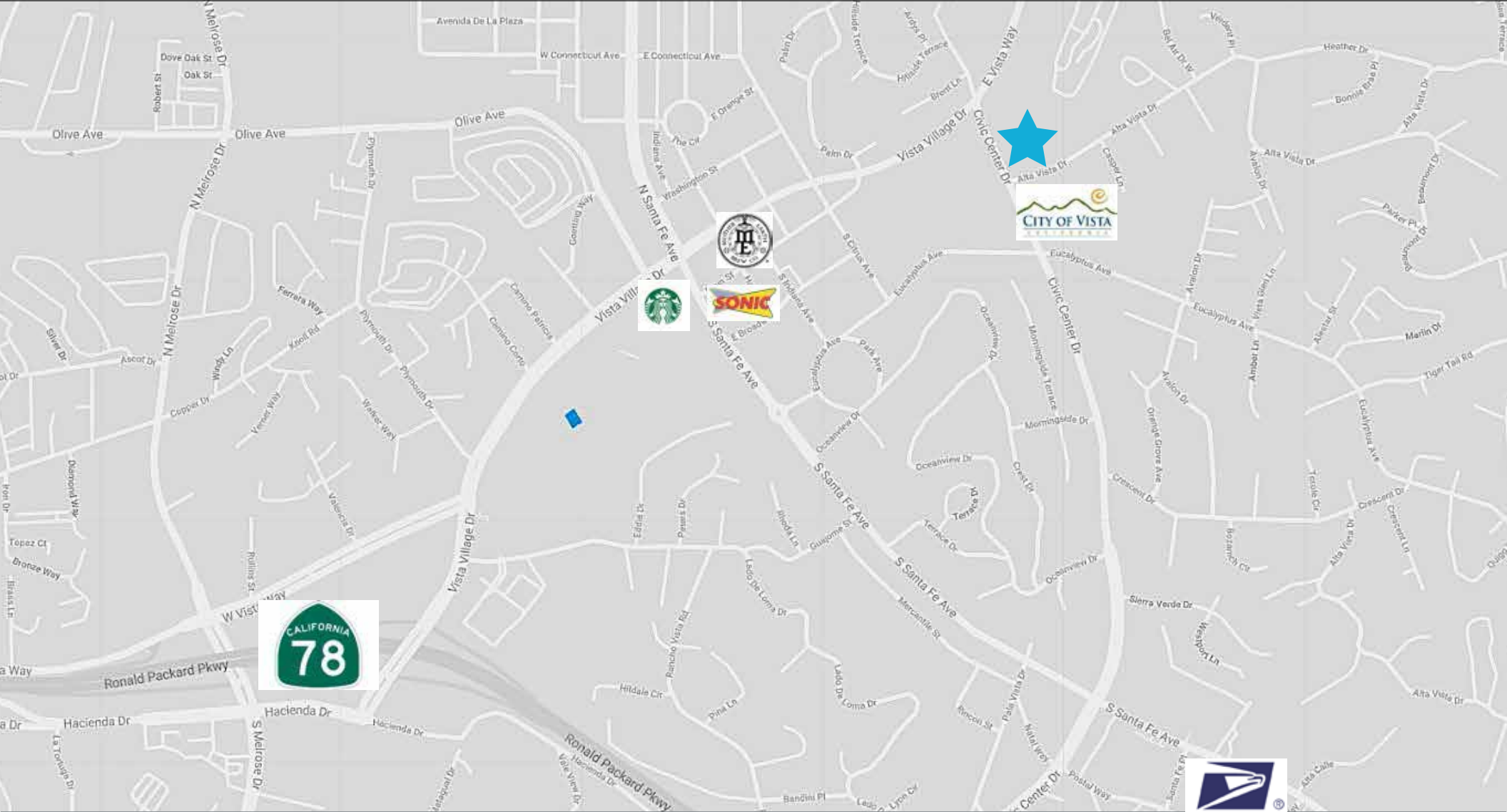


CALIFORNIA BANK & TRUST BUILDING

± 790 to ± 5,892 Square Feet

\$1.15/sf Mod. Gross
+ \$.15 CAM

138 Civic Center Drive, Suites 202, 203, 204, 207 & 208, Vista, California 92084



For more information on this property, your current property, or your future location, please contact:

Kenneth P. Dubs, Jr. CalBRE# 01277355
kdjr@dubsandcompany.com

1850 Diamond Street, Suite 103, San Marcos, California 92078

Office (760) 591-4100 Fax (760) 591-4102

CalBRE# 01385958

The information contained herein is deemed reliable, however no representations, warranties, or guaranties of any kind are made by Dubs and Company, Inc.

