

CALIFORNIA BANK & TRUST BUILDING

138-140 Civic Center Drive, Vista, California 92084

± 790 to ± 5,892 Square Feet

\$1.15/sf Mod. Gross
+ \$.15 CAM



- Beautiful 2 story professional office building
 - Prominent location in Downtown
 - Vista adjacent to City Hall
 - Well maintained with great access
 - Well suited for general office or medical
 - Ample parking in designated lot
- City of Vista C1 Zoning
- Call Listing agent for showing instructions

For more information on this property, your current property, or your future location, please contact:

Kenneth P. Dubs, Jr. CalBRE# 01277355
kdjr@dubsandcompany.com



1850 Diamond Street, Suite 103, San Marcos, California 92078 Office (760) 591-4100 Fax (760) 591-4102

CalBRE# 01385958

The information contained herein is deemed reliable, however no representations, warranties, or guaranties of any kind are made by Dubs and Company, Inc.

CALIFORNIA BANK & TRUST BUILDING

138-140 Civic Center Drive, Vista, California 92084

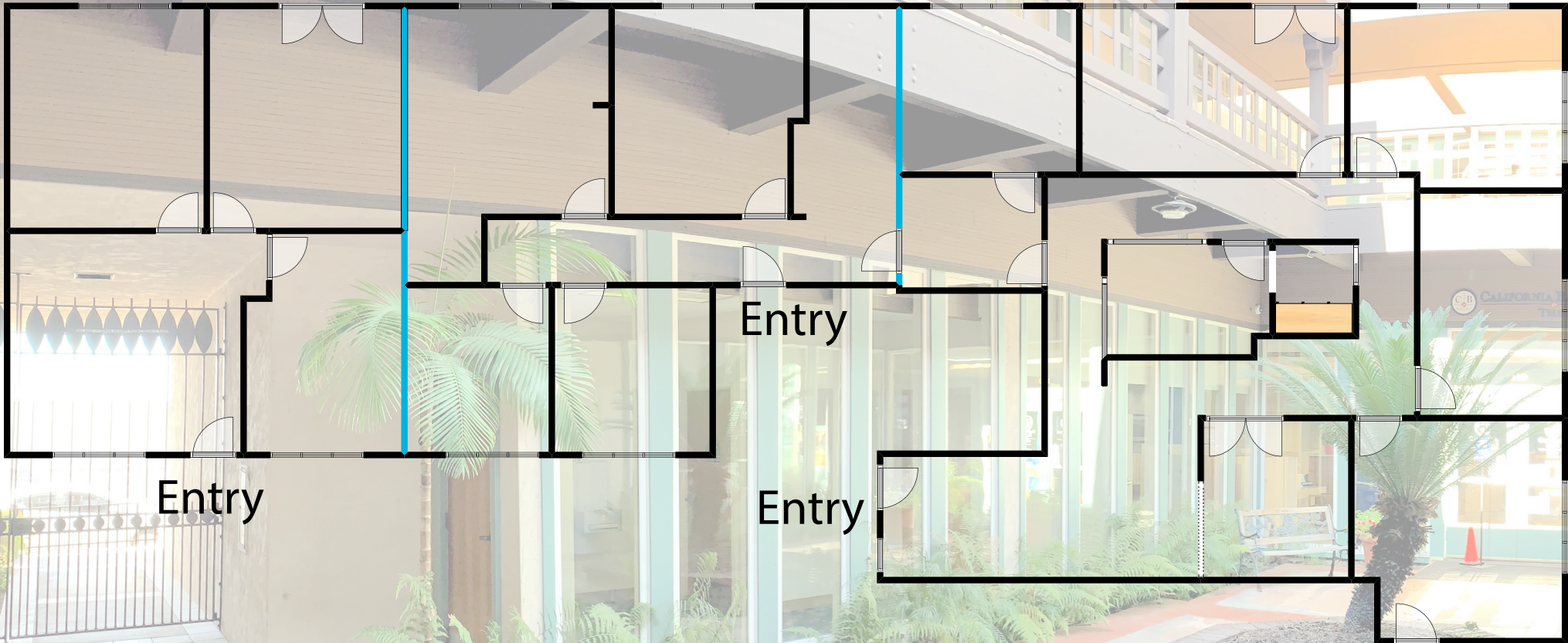
± 790 to ± 5,892 Square Feet

\$1.15/sf Mod. Gross
+ \$.15 CAM

Suite 202 ± 790sf

Suite 203 ± 849sf

Suite 204 ± 1,653sf



Suites 203 & 204 Combined ± 2,501sf

For more information on this property, your current property, or your future location, please contact:

Kenneth P. Dubs, Jr. CalBRE# 01277355
kdjr@dubsandcompany.com

1850 Diamond Street, Suite 103, San Marcos, California 92078

Office (760) 591-4100 Fax (760) 591-4102

CalBRE# 01385958

The information contained herein is deemed reliable, however no representations, warranties, or guaranties of any kind are made by Dubs and Company, Inc.



CALIFORNIA BANK & TRUST BUILDING

138-140 Civic Center Drive, Vista, California 92084

± 790 to ± 5,892 Square Feet

\$1.15/sf Mod. Gross
+ \$.15 CAM

Suite 207 / 208 ± 1,289sf

Suite 209 ± 1,312sf



Suites 207 - 209 Combined ± 2,601sf

CALIFORNIA BANK & TRUST BUILDING	
1ST FLOOR	
113 VISTA DENTAL CARE	201 SUN CENTER BUILDING
116 NORTH COUNTY BEHAVIORAL HEALTH	202 S&B BROS INC
116 TINA CASOLA, LMU I	205 WENSHI & THOMPSON, ATTORNEYS
116 DONNA L COOK, PH.D	205A EXPERTS IN HOME CARE FINANCIAL
116 CALIFORNIA BANK & TRUST	205B PAUL F. GAVIN, ATTORNEY
2ND FLOOR	206A MEDICAL FINANCIAL
	206B REALTORS CHOICE FINANCIAL
	207 REAL ESTATE PEOPLE
201 PIONEER MANAGEMENT	207A RAYMOND JAMES FINANCIAL SERVICES
202 PACIFIC PROPERTIES	207B MANAGER CONSULTING
	208 THE SAVANNA GROUP
	209 CALIFORNIA BANK & TRUST BUILDING

For more information on this property, your current property, or your future location, please contact:

Kenneth P. Dubs, Jr. CalBRE# 01277355
kdjr@dubsandcompany.com

1850 Diamond Street, Suite 103, San Marcos, California 92078

Office (760) 591-4100 Fax (760) 591-4102

CalBRE# 01385958

The information contained herein is deemed reliable, however no representations, warranties, or guaranties of any kind are made by Dubs and Company, Inc.

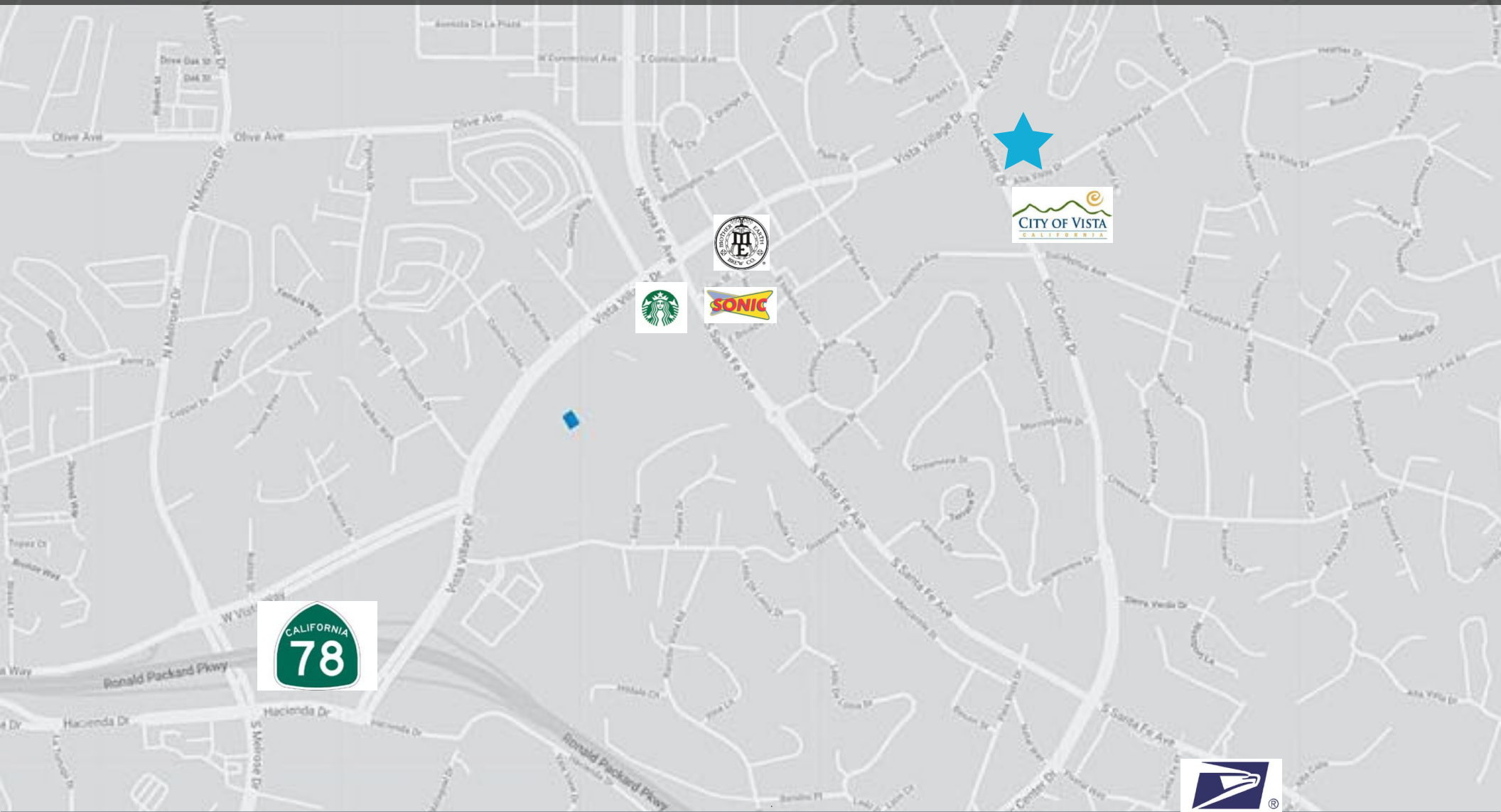


CALIFORNIA BANK & TRUST BUILDING

138-140 Civic Center Drive, Vista, California 92084

± 790 to ± 5,892 Square Feet

\$1.15/sf Mod. Gross
+ \$.15 CAM



For more information on this property, your current property, or your future location, please contact:

Kenneth P. Dubs, Jr. CalBRE# 01277355
kdjr@dubsandcompany.com



1850 Diamond Street, Suite 103, San Marcos, California 92078 Office (760) 591-4100 Fax (760) 591-4102

CalBRE# 01385958

The information contained herein is deemed reliable, however no representations, warranties, or guaranties of any kind are made by Dubs and Company, Inc.