

HICKORY PROFESSIONAL BUILDING

240 South Hickory Street, Escondido, California 92025

± 890 to ± 2,650 Square Feet

\$1.25/sf Gross
+ Utilities



- Beautiful 3 story elevator served professional office building
- Prominent location in Downtown Escondido close to freeways
- Well maintained with great access
- Well suited for general office or medical
- Ample parking in designated lot with additional street parking
- Parking Ratio = 4.0/1,000
- City of Escondido C-P Zoning
- Accessible by Lockbox JX130

For more information on this property, your current property, or your future location, please contact:

Deanna Console CaIBRE# 01428304
deanna@dubsandcompany.com

Vince Console CaIBRE# 01900022
vince@dubsandcompany.com

1850 Diamond Street, Suite 103, San Marcos, California 92078 Office (760) 591-4100 Fax (760) 591-4102

CalBRE# 01385958

The information contained herein is deemed reliable, however no representations, warranties, or guaranties of any kind are made by Dubs and Company, Inc.



HICKORY PROFESSIONAL BUILDING

240 South Hickory Street, Escondido, California 92025

± 890 to ± 2,650 Square Feet

\$1.25/sf Gross
+ Utilities

TENANT LIST - Hickory Professional Building

240 South Hickory Street

SUITE #	TENANT	SQ. FT.
100	Available	1,300
104	Available	890
106	Blue Oak Medical	896
110	Available	1,384
200	Dr. Gary Dudar	1,532
207	Dr. Jeffrey Kerbs	1,333
210	Available	2,264
300	Available	1,500
301	Available	900
303	Dr. Robert Frickman	2,020

CENTRAL
ESCONDIDO

Escondido

SOUTH
BOULEVARD

For more information on this property, your current property, or your future location, please contact:

Deanna Console CalBRE# 01428304
deanna@dubsandcompany.com

Vince Console CalBRE# 01900022
vince@dubsandcompany.com

1850 Diamond Street, Suite 103, San Marcos, California 92078

Office (760) 591-4100 Fax (760) 591-4102

CalBRE# 01385958

The information contained herein is deemed reliable, however no representations, warranties, or guaranties of any kind are made by Dubs and Company, Inc.



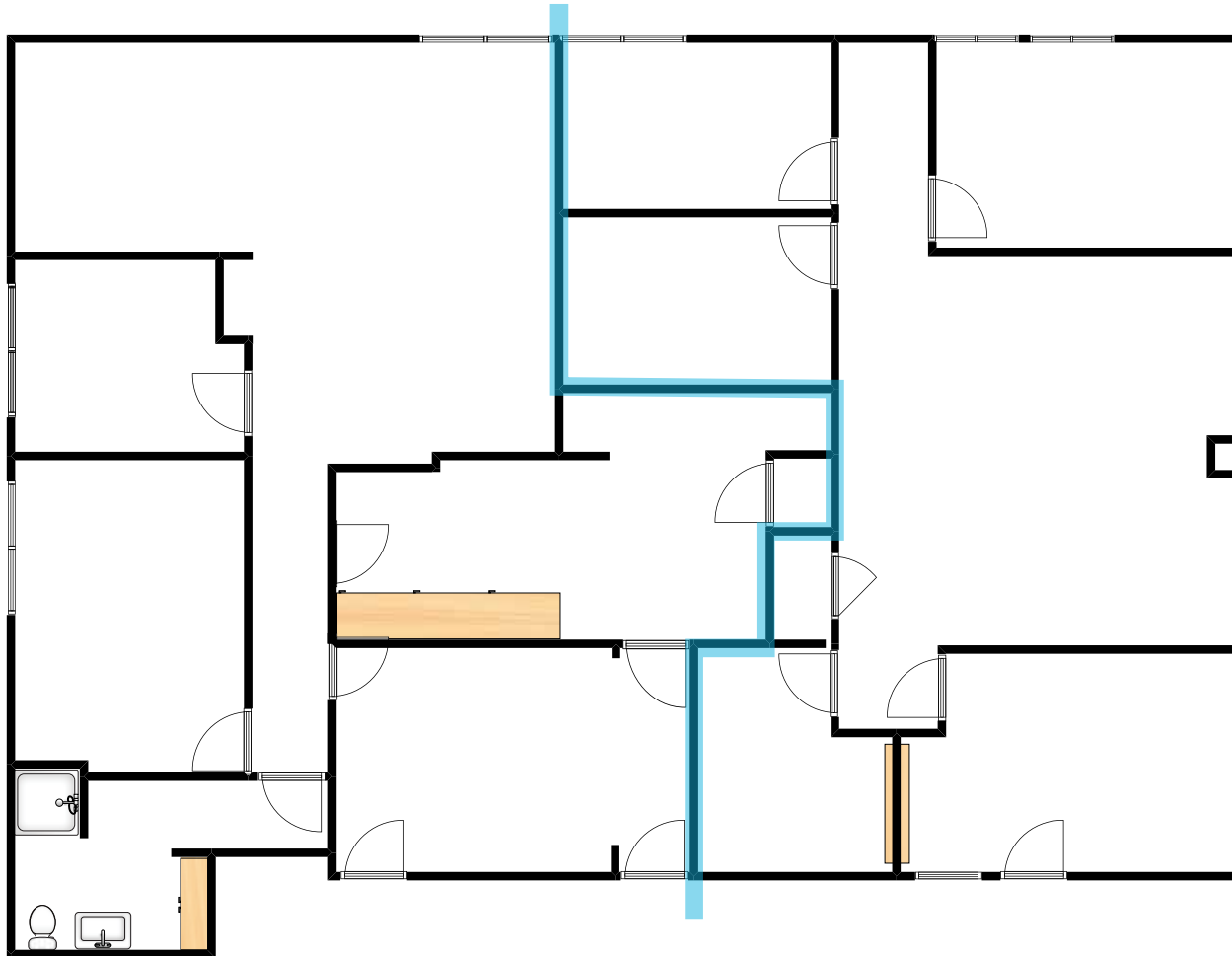
HICKORY PROFESSIONAL BUILDING

240 South Hickory Street, Escondido, California 92025

± 890 to ± 2,650 Square Feet

\$1.25/sf Gross
+ Utilities

240 S. Hickory Street #100 &104



SUITE #	SQ. FT.
100	1,300
104	890

For more information on this property, your current property, or your future location, please contact:

Deanna Console CaIBRE# 01428304
deanna@dubsandcompany.com

Vince Console CaIBRE# 01900022
vince@dubsandcompany.com

1850 Diamond Street, Suite 103, San Marcos, California 92078

Office (760) 591-4100 Fax (760) 591-4102

CaIBRE# 01385958

The information contained herein is deemed reliable, however no representations, warranties, or guaranties of any kind are made by Dubs and Company, Inc.



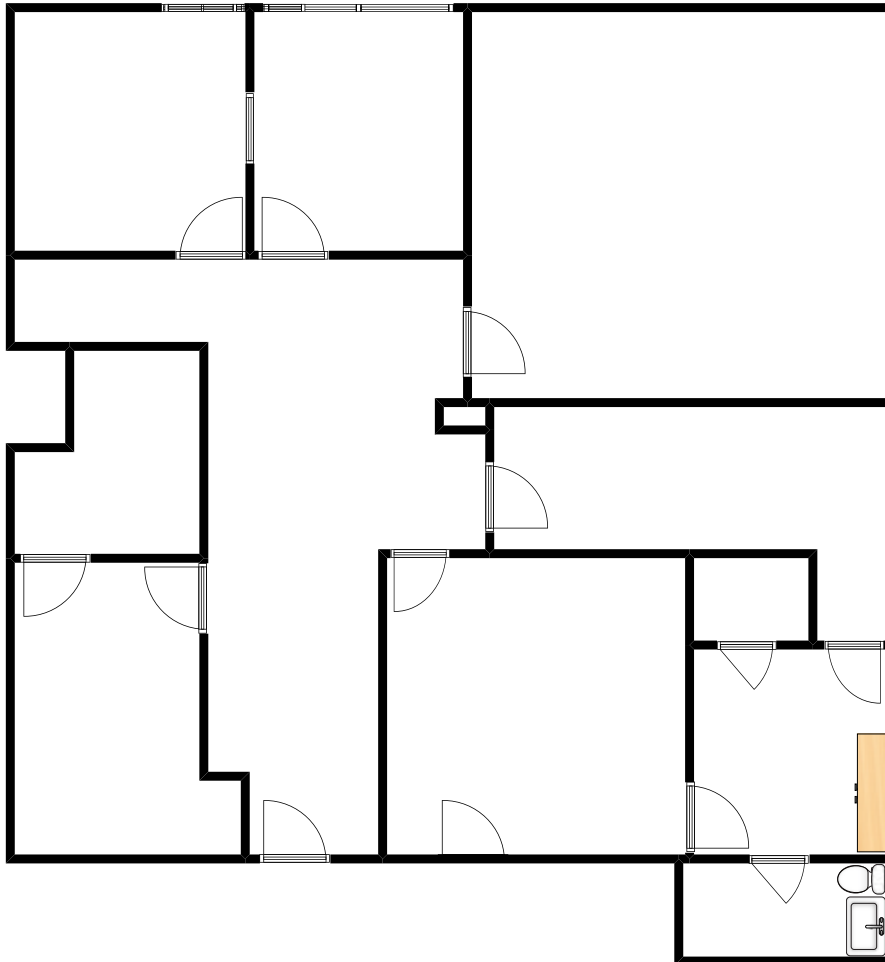
HICKORY PROFESSIONAL BUILDING

240 South Hickory Street, Escondido, California 92025

± 890 to ± 2,650 Square Feet

\$1.25/sf Gross
+ Utilities

240 S. Hickory Street #110



SUITE #	SQ. FT.
110	1,384

For more information on this property, your current property, or your future location, please contact:

Deanna Console CaIBRE# 01428304
deanna@dubsandcompany.com

Vince Console CaIBRE# 01900022
vince@dubsandcompany.com

1850 Diamond Street, Suite 103, San Marcos, California 92078

Office (760) 591-4100 Fax (760) 591-4102



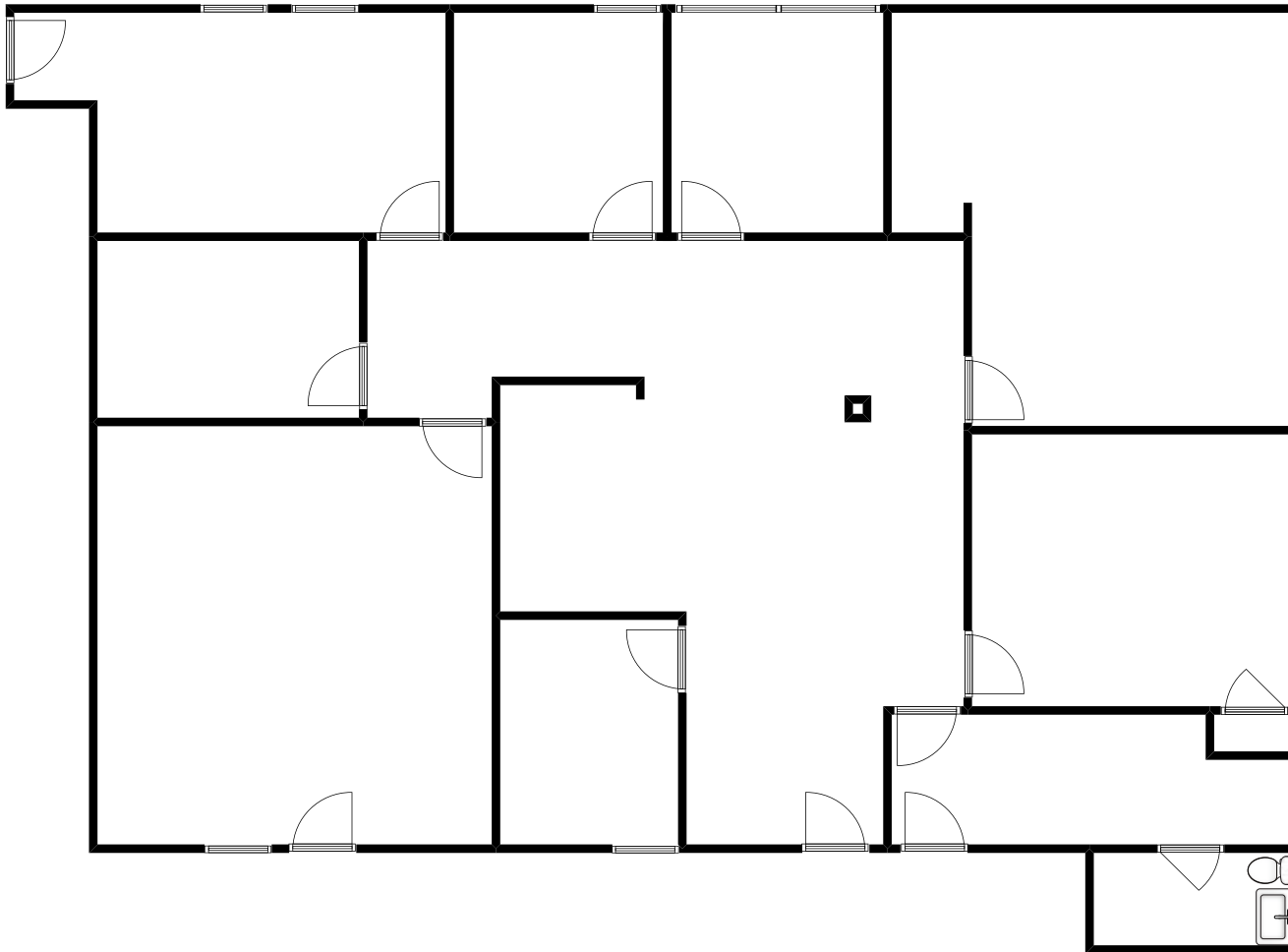
HICKORY PROFESSIONAL BUILDING

± 890 to ± 2,650 Square Feet

\$1.25/sf Gross
+ Utilities

240 South Hickory Street, Escondido, California 92025

240 S. Hickory Street #210



SUITE #	SQ. FT.
210	2,264

For more information on this property, your current property, or your future location, please contact:

Deanna Console CaIBRE# 01428304
deanna@dubsandcompany.com

Vince Console CaIBRE# 01900022
vince@dubsandcompany.com

1850 Diamond Street, Suite 103, San Marcos, California 92078

Office (760) 591-4100 Fax (760) 591-4102



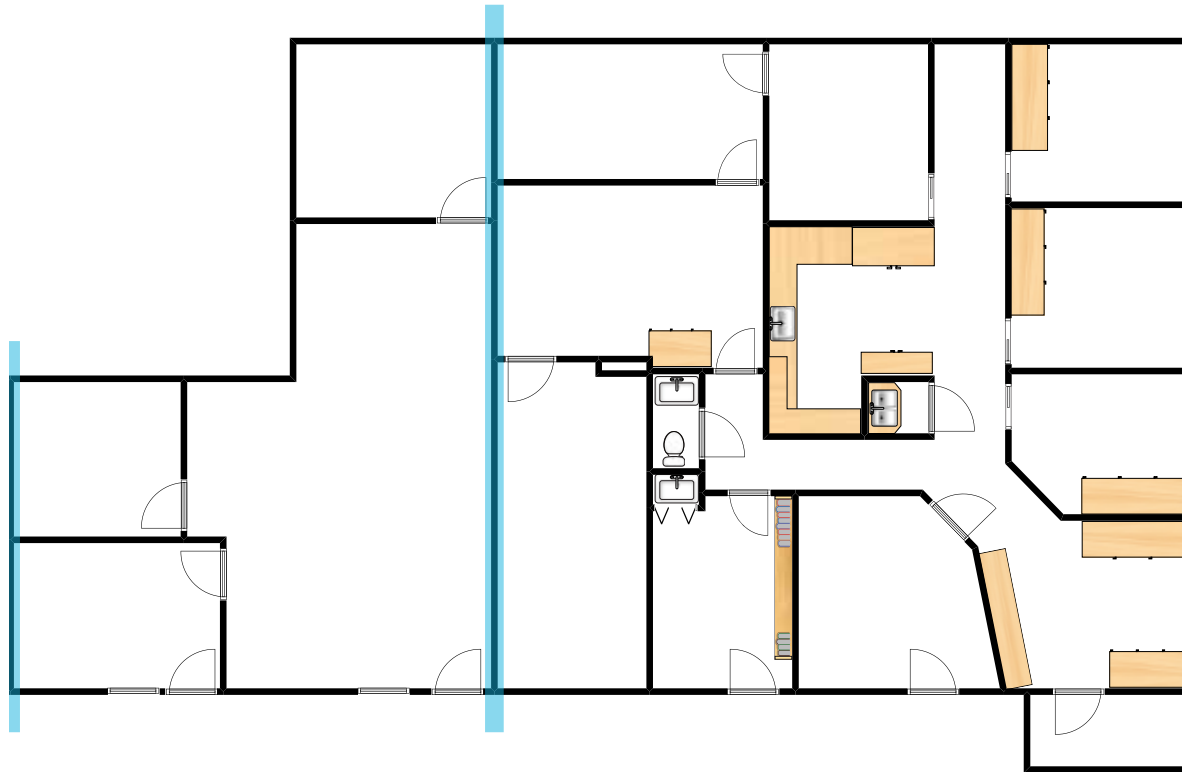
HICKORY PROFESSIONAL BUILDING

240 South Hickory Street, Escondido, California 92025

± 890 to ± 2,650 Square Feet

\$1.25/sf Gross
+ Utilities

240 S. Hickory Street #300, #301



SUITE #	SQ. FT.
300	1,500
301	900

For more information on this property, your current property, or your future location, please contact:

Deanna Console CaIBRE# 01428304
deanna@dubsandcompany.com

Vince Console CaIBRE# 01900022
vince@dubsandcompany.com

1850 Diamond Street, Suite 103, San Marcos, California 92078

Office (760) 591-4100 Fax (760) 591-4102

