

PARK PLACE NORTH

950 Boardwalk Avenue, Suite 301, San Marcos, CA 92078

± 2,353 Rentable Square Feet

\$.99/sf

*Monthly Rate | Year 1

- Prominent professional office building with elevator service
- Functional floorplan with four private offices and open bull-pen office area
- Generous conference / presentation room
- Kitchenette / breakroom with fridge/freezer, sink and cabinet storage
- Centrally located in the heart of San Marcos next to Old California Restaurant Row, theater and other businesses
- Panoramic views from exterior balconies
- Parking Ratio: 4/1,000
- Great Freeway access
- * \$.99 yr. 1, \$1.29 yr. 2, \$1.34 yr. 3

\$2,500.00 Broker Bonus
with 3 year minimum term



For more information on this property, your current property, or your future location, please contact:

Kenneth Dubs, Jr.

CalBRE# 01277355 kdjr@dubsandcompany.com

Deanna Console

CalBRE# 01428304 deanna@dubsandcompany.com

1850 Diamond Street, Suite 103, San Marcos, California 92078

Office (760) 591-4100 Fax (760) 591-4102

CalBRE# 01385958

The information contained herein is deemed reliable, however no representations, warranties, or guaranties of any kind are made by Dubs and Company, Inc.



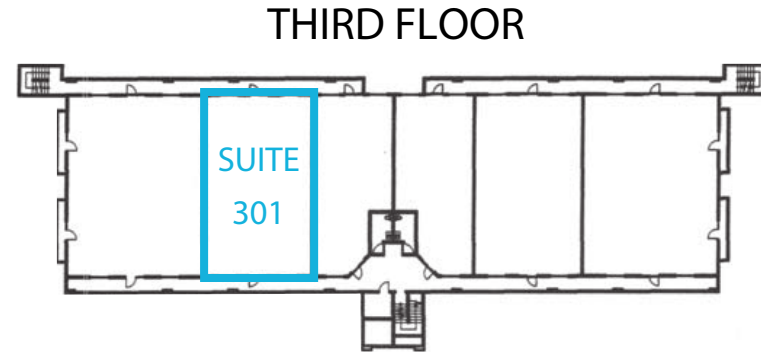
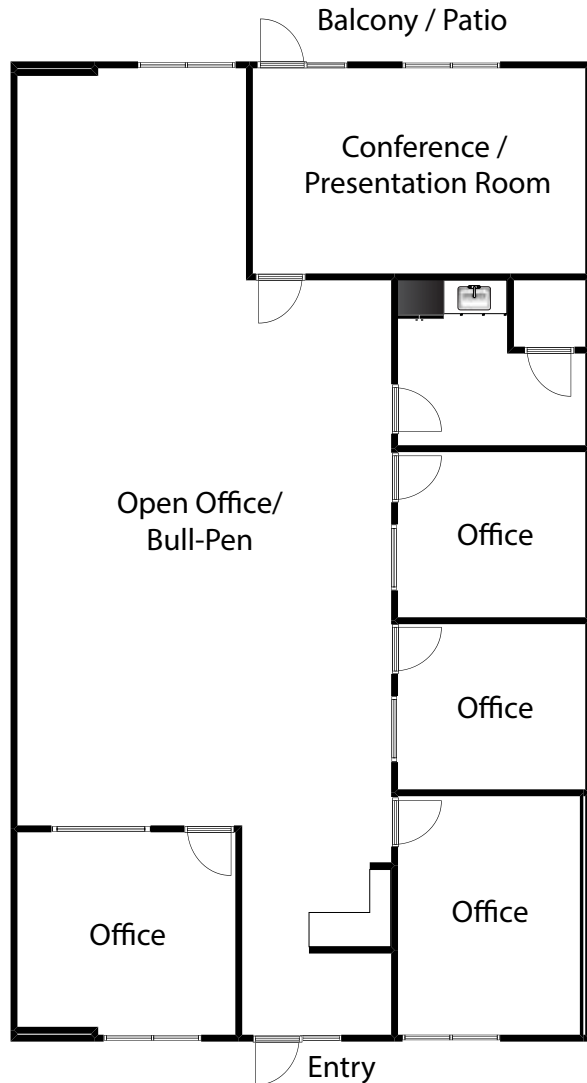
PARK PLACE NORTH

950 Boardwalk Avenue, Suite 301, San Marcos, CA 92078

± 2,353 Rentable Square Feet

\$.99/sf

*Monthly Rate | Year 1



For more information on this property, your current property, or your future location, please contact:

Kenneth Dubs, Jr.

CalBRE# 01277355 kdjr@dubsandcompany.com

Deanna Console

CalBRE# 01428304 deanna@dubsandcompany.com

1850 Diamond Street, Suite 103, San Marcos, California 92078

Office (760) 591-4100 Fax (760) 591-4102

CalBRE# 01385958

The information contained herein is deemed reliable, however no representations, warranties, or guaranties of any kind are made by Dubs and Company, Inc.



PARK PLACE NORTH

950 Boardwalk Avenue, Suite 301, San Marcos, CA 92078

± 2,353 Rentable Square Feet

\$.99/sf

*Monthly Rate | Year 1



For more information on this property, your current property, or your future location, please contact:

Kenneth Dubs, Jr.

CalBRE# 01277355 kdjr@dubsandcompany.com

Deanna Console

CalBRE# 01428304 deanna@dubsandcompany.com

1850 Diamond Street, Suite 103, San Marcos, California 92078

Office (760) 591-4100 Fax (760) 591-4102

CalBRE# 01385958

The information contained herein is deemed reliable, however no representations, warranties, or guaranties of any kind are made by Dubs and Company, Inc.



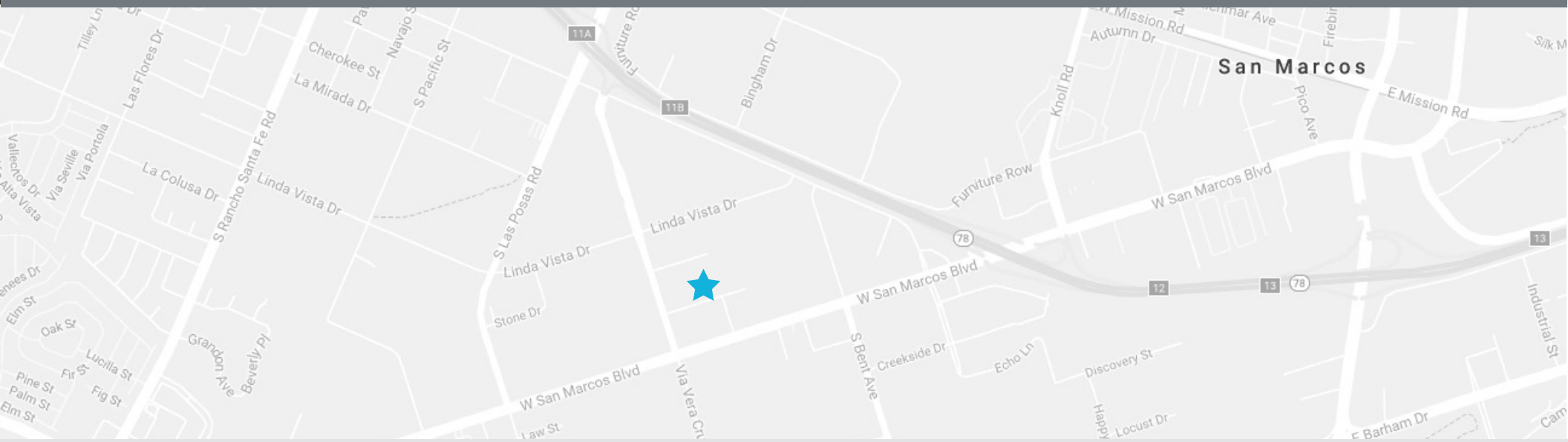
PARK PLACE NORTH

950 Boardwalk Avenue, Suite 301, San Marcos, CA 92078

± 2,353 Rentable Square Feet

\$.99/sf

*Monthly Rate | Year 1



For more information on this property, your current property, or your future location, please contact:

Kenneth Dubs, Jr.

CalBRE# 01277355 kdjr@dubsandcompany.com

Deanna Console

CalBRE# 01428304 deanna@dubsandcompany.com

1850 Diamond Street, Suite 103, San Marcos, California 92078

Office (760) 591-4100 Fax (760) 591-4102

CalBRE# 01385958

The information contained herein is deemed reliable, however no representations, warranties, or guaranties of any kind are made by Dubs and Company, Inc.

