

FOR LEASE

840 Square Feet

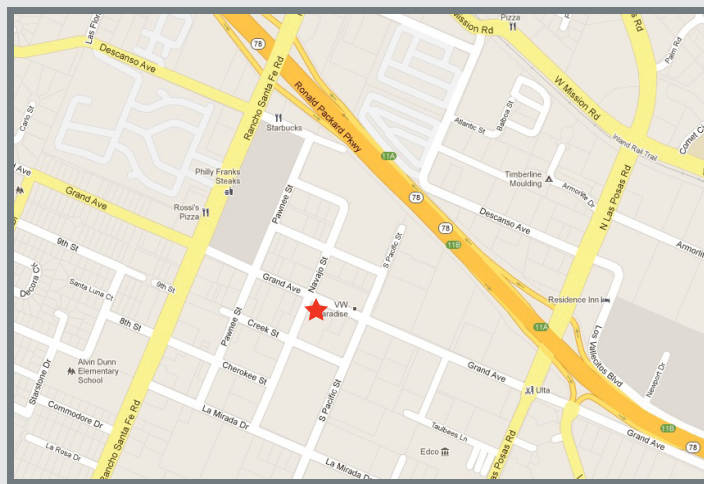
# Professional / Medical Office Suite



1529 Grand Avenue, Suite B, San Marcos, CA 92078

## Property Features:

- Beautiful, Garden Style Professional Office Center in the Heart of San Marcos, Approx. 840 sq.ft.
- Project has High Visibility on Grand Avenue
- Great Monument and Suite Signage
- Easy Access to Las Posas, Rancho Santa Fe Road, and Hwy. 78
- Convenient Central, North County Location
- Great Parking, 5.57:1,000 Spaces
- \$.12 per sq. ft. per Month CAM Fees
- Rare Single Level Professional/Medical Office Space
- Contact Listing Agent for Showing Instructions



**\$1.85 /Mod. Gross**

For more information on this property, your current property, or your future location, please contact:

**Kenneth Dubs, Jr.**

CalBRE#01277355

[kdjr@dubsandcompany.com](mailto:kdjr@dubsandcompany.com)

Office (760) 591-4100 Fax (760) 591-4102

1850 Diamond Street, Suite 103, San Marcos, California 92078

The information contained herein is deemed reliable, however no representations, warranties, or guaranties of any kind are made by Dubs and Company, Inc.



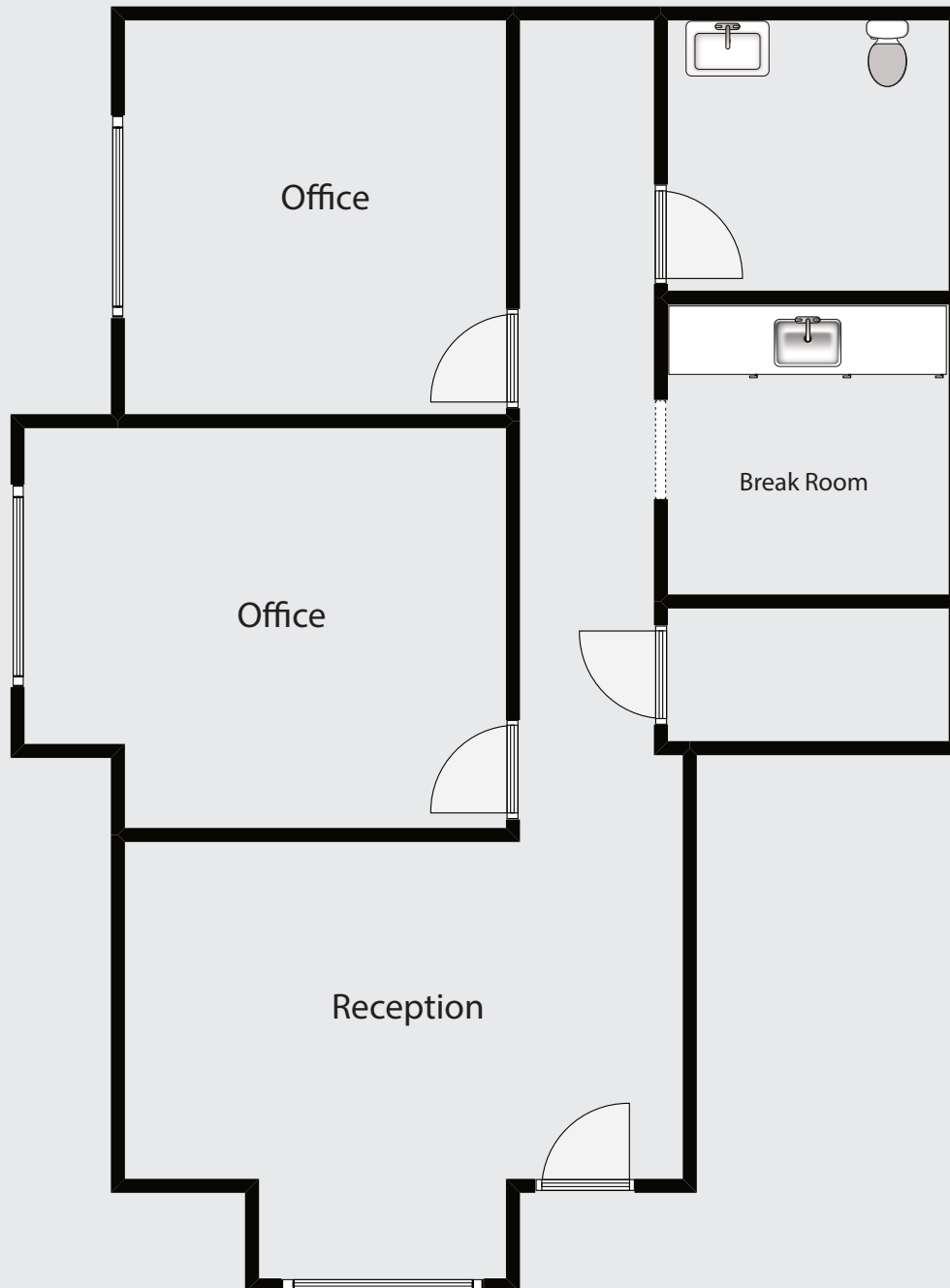
CalBRE# 01385958

**FOR LEASE**

**840 Square Feet**

# Professional / Medical Office Suite

1529 Grand Avenue, Suite B, San Marcos, CA 92078



**\$1.85 /mo. Mod. Gross**

For more information on this property, your current property, or your future location, please contact:

**Kenneth Dubs, Jr.**

CalBRE#01277355

[kdjr@dubsandcompany.com](mailto:kdjr@dubsandcompany.com)

Office (760) 591-4100 Fax (760) 591-4102

1850 Diamond Street, Suite 103, San Marcos, California 92078

The information contained herein is deemed reliable, however no representations, warranties, or guaranties of any kind are made by Dubs and Company, Inc.



CalBRE# 01385958